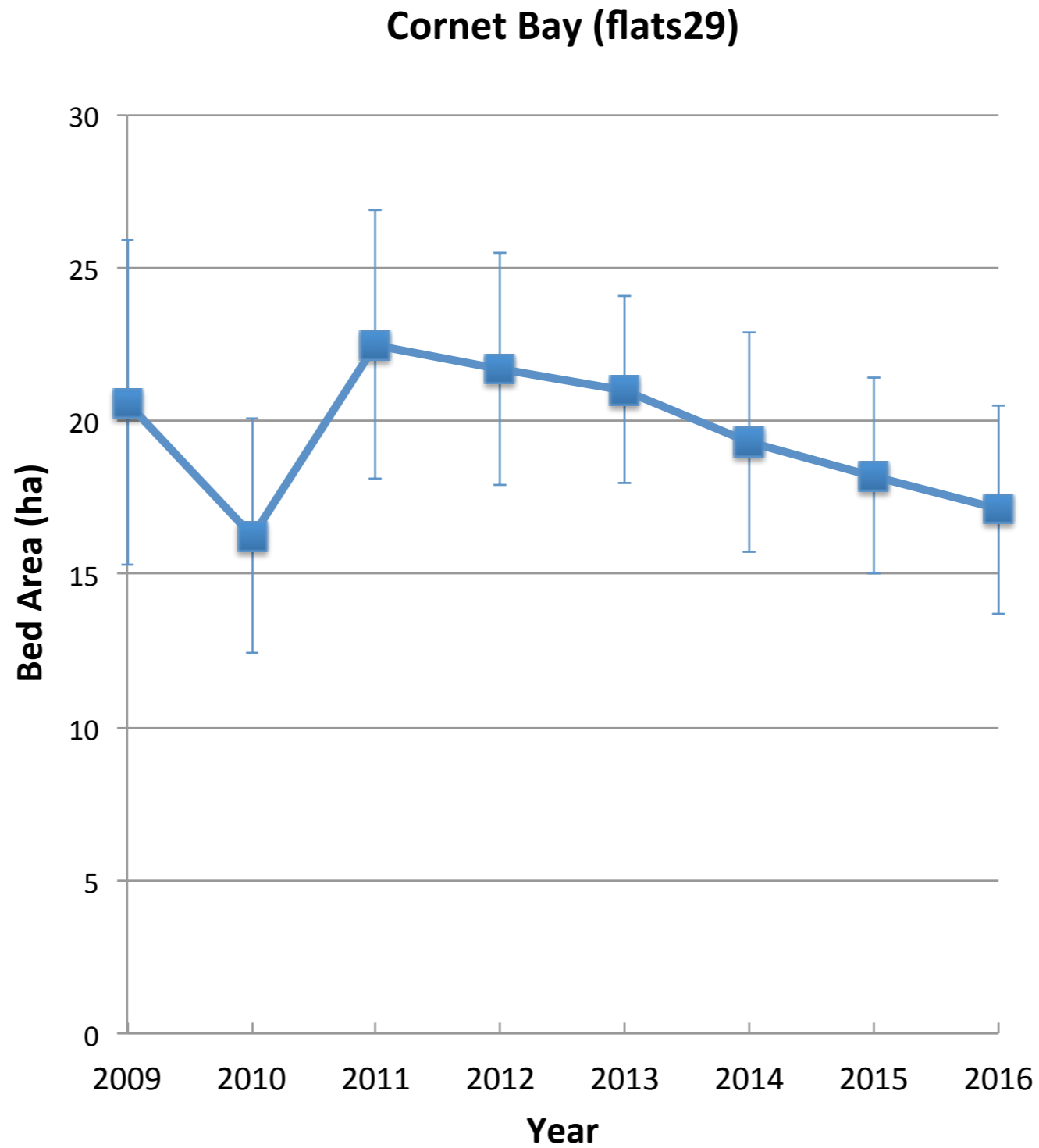
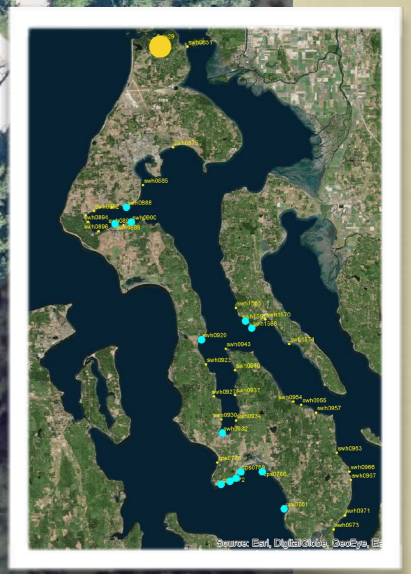


FLATS29 - CORNET BAY

2016



- NONE
- Z_M
- Z_J
- Z_M+Z_J
- X
- Z_MORZ_J



6/27/16

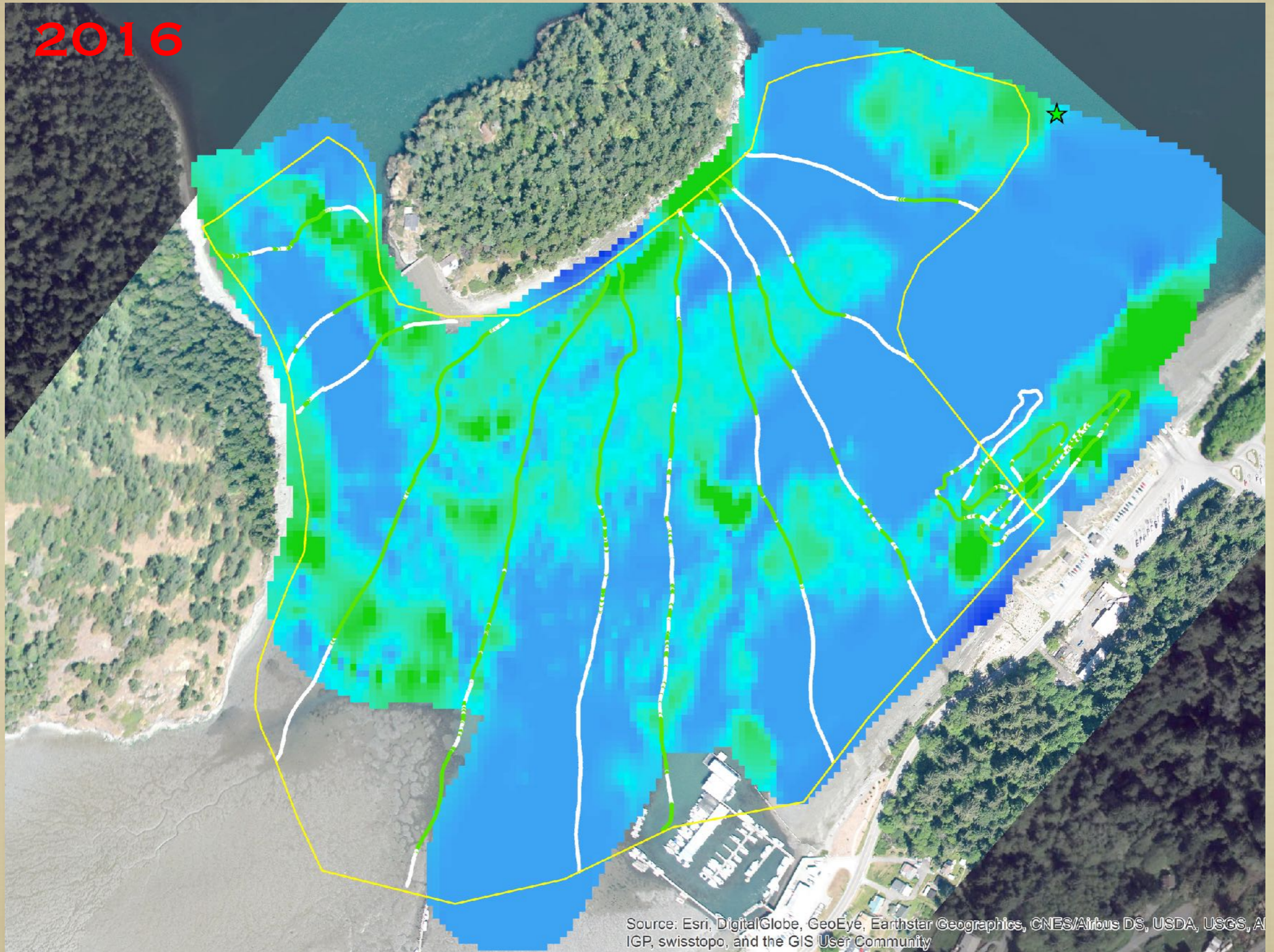
Z_m BA 17.1 ± 3.4

7/3/15

Source: Esri, DigitalGlobe, GeoEye, Earthstar Geographics, CNES/Airbus, GIS User Community

FLATS29 - CORNET BAY

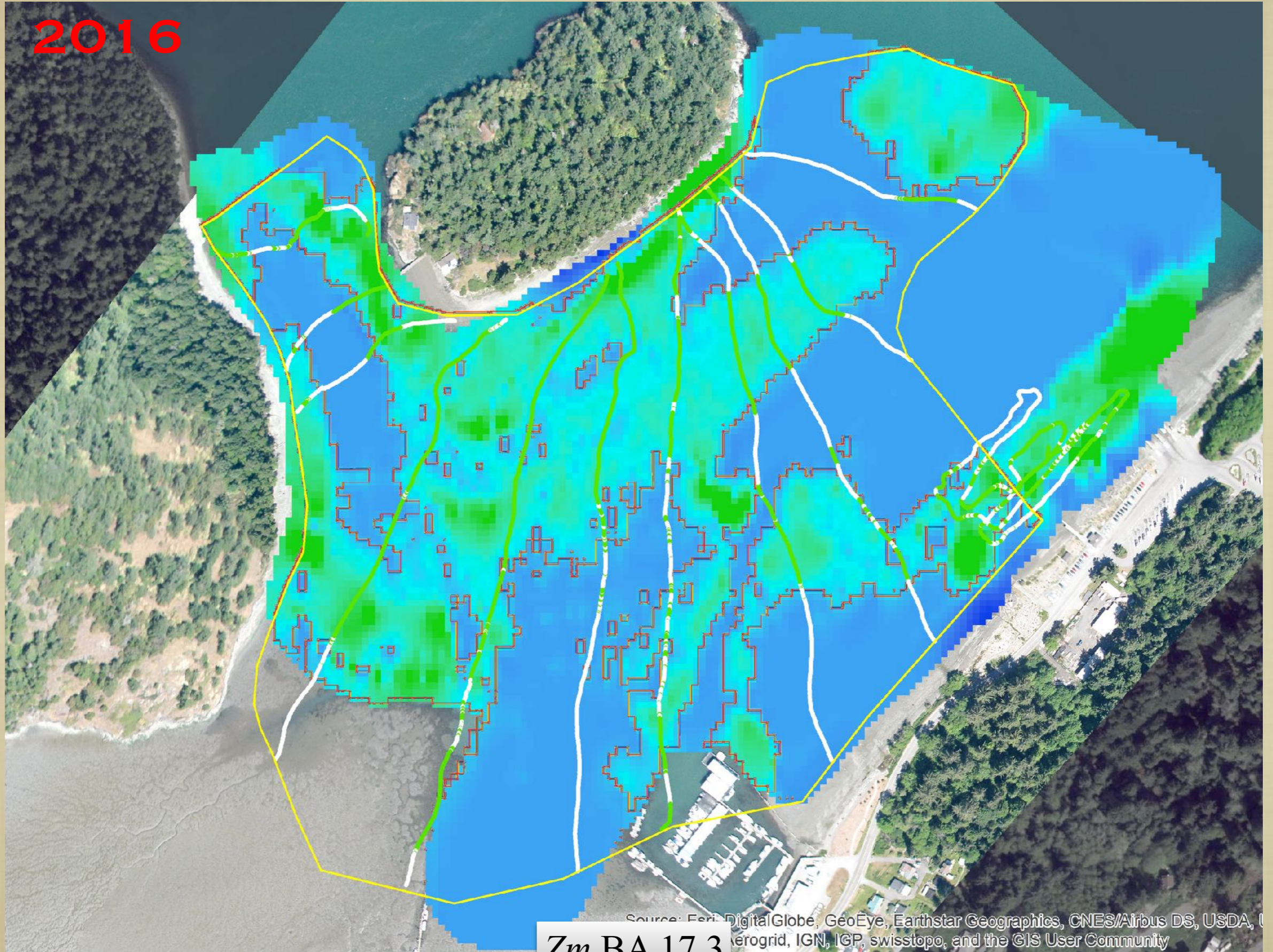
2016



Source: Esri, DigitalGlobe, GeoEye, Earthstar Geographics, CNES/Airbus DS, USDA, USGS, AeroGRID, IGN, IGP, swisstopo, and the GIS User Community

FLATS29 - CORNET BAY

2016



Source: Esri, DigitalGlobe, GeoEye, Earthstar Geographics, CNES/Airbus DS, USDA, AeroGRID, IGN, IGP, swisstopo, and the GIS User Community

Zm BA 17.3

Boating Activity



flats029

FLATS29 - CORNET BAY

2012

5/7/12

FLATS29 - CORNET BAY

2013



5/28/13

FLATS29 - CORNET BAY

2014



6/16/14

FLATS29 - CORNET BAY



2015

7/2/15

Source: Esri, DigitalGlobe, GeoEye, i-cubed, Earthstar Geographics, CNES
USGS, AEX, Getmapping, Aerogrid, IGN, IGP, swisstopo, and the GIS User Community

FLATS29 - CORNET BAY

2016



Source: Esri, DigitalGlobe, GeoEye, Earthstar Geographics, CNES/Airbus
Getmapping, Aerogrid, IGN, IGP, swisstopo, and the GIS User Community

6/5/16

FLATS29 - CORNET BAY

2016



Source: Esri, DigitalGlobe, GeoEye, Earthstar Geographics, CNES/Airbus DS, USDA, USGS, AEX, Getmapping, Aerogrid, IGN, IGP, swisstopo, and the GIS User Community

FLATS29 - CORNET BAY

2016



Source: Esri, DigitalGlobe, GeoEye, Earthstar Geographics, CNES/Airbus DS, USDA, USGS, AEX, Getmapping, Aerogrid, IGN, IGP, swisstopo, and the GIS User Community

FLATS29 - CORNET BAY

